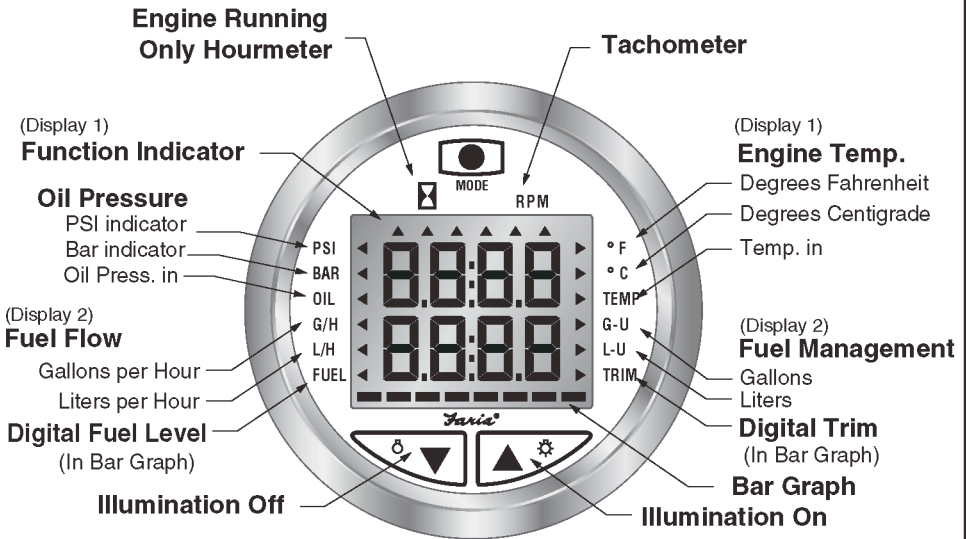


Pilot II Quick Reference Guide

Key Pad Functions Display



Faria Pilot II Description

The Faria Pilot II system is a multifunctional instrument designed to give simultaneous readouts of several different and independent functions on an upper and lower LCD display. A digital Bar Graph provides continuous display of either Trim or Fuel Level. The illustration above shows the various functions provided by the instrument.

Warning: The Fuel Management system is not to be used for navigation.

Important: Always install the Fuel Flow Transducer AFTER the primary filter.

The primary filter must be a good quality water separator type with a minimum filtration of 30 microns or better. Failure to provide this level of filtration protection will result in inaccurate readings or total failure or damaged to the transducer. If there is not a suitable length of hose after the primary filter, an in-line filter (30 micron or better) should be fitted before the Fuel Flow transducer. Damage due to insufficient filtration is not covered by warranty. If in doubt please consult you local Faria® Marine Instruments dealer for advice prior to installation.

Faria® **MARINE**
INSTRUMENTS

P.O. Box 983 • Uncasville, CT 06382
(860) 848-9271 • (800) 473-2742 • FAX (860) 848-2704
faria@faria-instruments.com

ISO180
ISO180A ECR#3697 05/2003

Press the Pilot II will beep.

= Press and Hold button. = Quick Press button

Press to select
Display 1.
Display blinks.



Press to select
Display 2.
Display blinks.



Press will move Function Indicator.

Power:

Pilot II is turned on with the ignition key.

Pilot II Lights:

Ignition key on use the "Up" or "Down" button change the light level.

Select Display: Press the "mode-M" button once quickly. The Pilot II will beep.

Display 3 is not changeable. (see below)

Select a Function: With the desired display blinking, press the "mode-M" button quickly. The Function Indicator () will move. Stop pressing the "mode-M" button when the desired function is indicated.

Edit Mode: (Changing values in a selected function.) Using the Function Indicator select the function you wish to make changes.

Press and hold the "mode-M" button . The Pilot II will beep, and the Function Indicator for that function will blink.

Edit Mode

Display 1



Tachometer

Use to set Over Rev. limits.



Engine Temp.

Over Temp Alarm

Use to set Over Temp. limits.



Units

Use to change display units.



F (Fahrenheit)

C (Centigrade)



Oil Pressure

Oil Press. Alarm

Use to set Alarm limits.



Units

Use to change display units.



PSI

BAR

Display 2



Fuel Flow

Use to change display units.



G/H

L/H



Fuel Used

Use to Reset the display to zero.



G-U

L-U



Total Fuel Used

Use to Reset the display to zero.



Fuel Remaining in Tank

Use to match the known value of fuel in tank.

(Entered in 0.1 gal/Liters steps.)



Fuel Remaining in Tank Alarm

Use to set the number of gallons of fuel remaining which the alarm will activate. (Entered in 1.0 gal/Liters steps.)



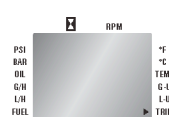
Engine Running Only Hourmeter

Display 3



Fuel Level

1 segment lit = empty
8 segments lit = full



Trim Level Bar

1 segment lit = Down
8 segments lit = Up