

Faria Beede

INSTRUMENTS



MARINE
CATALOG
2024

CONTENTS

ABOUT US	2
BRAND FAMILY	2
CHESAPEAKE WHITE	3
EURO	4
CHESAPEAKE BLACK	5
NEWPORT	6
KRONOS	6
PLATINUM	7
CORAL	7
EURO WHITE	8
DRESS WHITE	8
BOXED SETS	9
TRANSDUCERS	10
ACCESSORIES	10
SENDERS	11
REPAIR / WARRANTY	12

BRAND FAMILY



We've expanded our offerings by acquiring three brands you've counted on for quality and dependability—Faria Beede, VisionMark and TST (Transportation Safety Technologies). With their products included in our lineup, we're proud to offer manufacturing solutions for many different applications.

LOCATIONS:

Fort Wayne, IN

Chesterfield, MI

Sidney, OH

North Stonington, CT



Faria Beede Instruments, Inc. has been manufacturing gauges and instruments in Connecticut for more than 60 years. We offer analog and digital engine monitoring, as well as telematics solutions for a wide range of global marine, military, industrial and other types of commercial industries.

One of the few remaining vertically integrated U.S. manufacturers of SAE J1939 instrumentation, Faria Beede provides some of the best turnaround times and responsive support in the industry. This is only possible by having total control of all aspects of design, engineering and manufacturing. Whether you are in need of a simple analog instrument or a complete digital engine monitoring gauge, Faria Beede has the instrument solution that is right for you.

CHESAPEAKE WHITE STAINLESS STEEL

Perimeter-lighted white dial with stylish blue and black graphics, polished stainless steel bezel, contoured black pointer, and domed glass lens.

Catalog	Factory	Size	Description
KTF001	KTF001		Boxed Set - Inboard - Speedo (60 MPH) (Mech) Tach (6000 RPM) Fuel Level Voltmeter (10-16 VDC) Water Temp (100-250 F) Oil PSI (80 PSI)
KTF063	KTF063		Boxed Set - Inboard - Speedo (60 MPH) (GPS) Tach (6000 RPM) Fuel Level Voltmeter (10-16 VDC) Water Temp (100-250 F) Oil PSI (80 PSI)
KTF002	KTF002		Boxed Set - Outboard - Speedo (60 MPH) (Mech) Tach (7000 RPM) Fuel Level Voltmeter (10-16 VDC)

Depth Sounders			
F13852	DS1004	2	Depth Sounder with Air and Water Temperature (Transom Mounted Transducer)
F13850	DS0110	2	Depth Sounder (Transom Mounted Transducer)
F13851	DS0110	2	Depth Sounder (In-Hull Mounted Transducer)

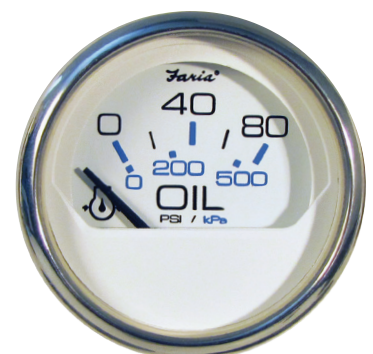
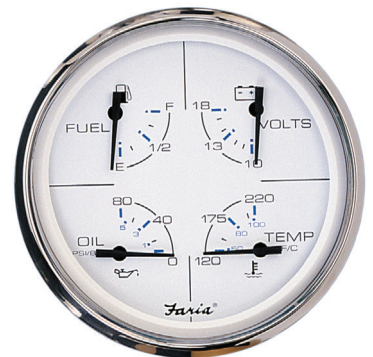
Tachometers			
F33807	TC9796	4	Tachometer (6000 RPM) (Gas) (Inboard & I/O)
F33817	TC9002	4	Tachometer (7000 RPM) (All outboard)
F33842	TD9128	4	Tachometer (4000 RPM) (Diesel) (Mechanical takeoff & var ratio alt)
F33818	TD9733	4	Tachometer (4000 RPM) (Diesel) (Mag Pick-Up)
F33863	TC9381	5	Tachometer with Hourmeter (6000 RPM) (Gas) (Inboard)
F33832	TC9128	4	Tachometer with Hourmeter (6000 RPM) (Gas) (Inboard)
F33840	TCH008	4	Tachometer w/ Hourmeter (7000 RPM) (Gas)(Outboard)
F33834	TD9108	4	Tachometer with Hourmeter (4000 RPM) (Diesel) (Mech takeoff & var ratio alt)
F33850	TC9881	4	Tachometer (7000 RPM) with SystemCheck Indicator (Gas) (I/E Outboard)

GPS Speedometers			
F33861	SGP502	5	Speedometer (60 MPH) (GPS) (Studded)
F33829	SGP010	4	Speedometer (80 MPH) (GPS)
F33826	SGP003	4	Speedometer (60 MPH) (GPS)
F33839	SGP113	4	Speedometer (60 MPH) (GPS) (Studded)

Speedometers			
F33811	SE9521	4	Speedometer (60 MPH) (Pitot)
F33819	SE9522	4	Speedometer (80 MPH) (Pitot)

Multi-Function Instruments			
F33801	SY9629	4	Synchronizer (Dual Engine) Gas and Variable Ratio / Alternator type diesels only.
F33864	GF4004	5	Multifunction [Fuel Level Oil PSI (80 PSI) Water Temp (120-220 F) Voltmeter (10-18 VDC)]
F33851	GF0008	4	Multifunction [Fuel Level Oil PSI (80 PSI) Water Temp (120-220 F) Voltmeter (10-18 VDC)]

Indicators			
F13801	GP9373	2	Fuel Level Gauge (E-1/2-F)
F13818	GP9791	2	Fuel Level Gauge (Metric)
F13802	GP9647	2	Oil Pressure Gauge (80 PSI)
F13812	OP1022	2	Water Pressure Gauge Kit (30 PSI)
F13806	GP9454	2	Cylinder Head Temperature (60 - 220 F) with sender
F13804	GP9146	2	Water Temperature Gauge (100-250 F)
F13828	GP9178	2	Water Temperature Gauge (40-120 C) (Metric)
F13891	CL1026	2	Clock (Quartz) (Analog)
F13889	GP7440	2	Trim Gauge (Honda)
F13807	GP9649	2	Trim Gauge (Mercury/Mariner/Mercuriser/Volvo DP/ Yamaha-2001 and newer)
F13809	GP9418	2	Trim Gauge (J/E/Suzuki Outboard)
F13808	GP9734	2	Trim Gauge (OMC Cobra (1993-1994) / Volvo SX (MD models only))
F13822	GP7378	2	Rudder Angle Indicator
F13815	MH0211	2	Hourmeter [Digital] (12-32 volts)
F13805	VP9158	2	Voltmeter (10-16 VDC)



EURO

Perimeter-lighted black dial with bold white graphics, black aluminum bezel, contoured white pointer, and flat glass lens.

Catalog	Factory	Size	Description
KT9799	KT9799		Boxed Set - Inboard - Speedo (55 MPH) (Mech) Tach (6000 RPM) Fuel Level Voltmeter (10-16 VDC) Water Temp (100-250 F) Oil PSI (80 PSI)
KT9796	KT9796		Boxed Set - Outboard - Speedo (55 MPH) (Mech) Tach (7000 RPM) Fuel Level Voltmeter (10-16 VDC)

Depth Sounders			
F12850	DS0101	2	Depth Sounder (Transom Mounted Transducer)
F12851	DS0101	2	Depth Sounder (In-Hull Mounted Transducer)

Tachometers			
F32804	TC9643	4	Tachometer (6000 RPM) (Gas) (Inboard & I/O)
F32805	TC9011	4	Tachometer (7000 RPM) (All outboard)
F32842	TD9122	4	Tachometer (4000 RPM) (Diesel) (Mechanical takeoff & var ratio alt)
F32803	TD9671	4	Tachometer (4000 RPM) (Diesel) (Mag Pick-Up)
F32832	TC9122	4	Tachometer with Hourmeter (6000 RPM) (Gas) (Inboard)
F32840	TCH015	4	Tachometer with Hourmeter (7000 RPM) (Gas) (Outboard)
F32834	TD9102	4	Tachometer with Hourmeter (4000 RPM) (Diesel) (Mech takeoff & var ratio alt)
F32850	TC9951	4	Tachometer (7000 RPM) with SystemCheck Indicator (Gas) (I/E Outboard)

Speedometers			
F32810	SE9463	4	Speedometer (55 MPH) (Mechanical)
F32812	SE9460	4	Speedometer (80 MPH) (Mechanical)

GPS Speedometers			
F32816	SGP110	4	Speedometer (60 MPH) (GPS) (Studded)

Multi-Function Instruments			
F32851	GF0001	4	Multifunction [Fuel Level Oil PSI (80 PSI) Water Temp (100-250 F) Voltmeter (10-16 VDC)]

Indicators			
F12801	GP9357	2	Fuel Level Gauge (E-1/2-F)
F12802	GP9322	2	Fuel Level Gauge (Metric)
F12830	GP9324	2	Tank Level Gauge (Potable water)
F12803	GP9599	2	Oil Pressure Gauge (80 PSI)
F12845	GP9597	2	Oil Pressure Gauge (100 PSI)
F12810	OP1004	2	Water Pressure Gauge Kit (30 PSI)
F12875	OP1014	2	Water Pressure Gauge Kit (60 PSI)
F12819	GP9438	2	Cylinder Head Temperature (60 - 220 F) with sender
F12812	GP9118	2	Water Temperature Gauge (100-250 F)

Blank Gauges			
F32861	TC9640	4	Blank gauge fill
F12861	AP9475	2	Blank gauge fill
F12814	GP9124	2	Water Temperature Gauge (40-120 C) (Metric)
F12828	GP9374	2	Trim Gauge (Mercury/Mariner/Mercruiser/Volvo DP/ Yamaha-2001 and newer)
F12827	GP9305	2	Trim Gauge (I/E/Suzuki Outboard)
F12822	AP9523	2	Ammeter (60-0-60)
F12823	VP7901	2	Battery Condition Indicator (12 VDC)
F12825	CL1008	2	Clock (Quartz) (Analog)
F12835	MH0232	2	Hourmeter [Digital] (12-32 volts)
F12821	VP9134	2	Voltmeter (10-16 VDC)
F12860	VP9191	2	Voltmeter (20-32 VDC)



CHESAPEAKE BLACK STAINLESS STEEL

Perimeter-lighted black dial with stylish blue and white graphics, polished stainless steel bezel, contoured white pointer, and domed glass lens.

Catalog	Factory	Size	Description
KTF003	KTF003		Boxed Set - Inboard - Speedo (60 MPH) (Mech) Tach (6000 RPM) Fuel Level Voltmeter (10-16 VDC) Water Temp (100-250 F) Oil PSI (80 PSI)
KTF064	KTF064		Boxed Set - Inboard - Speedo (60 MPH) (GPS) Tach (6000 RPM) Fuel Level Voltmeter (10-16 VDC) Water Temp (100-250 F) Oil PSI (80 PSI)
KTF004	KTF004		Boxed Set - Outboard - Speedo (60 MPH) (Mech) Tach (7000 RPM) Fuel Level Voltmeter (10-16 VDC)

Depth Sounders			
F13752	DS1002	2	Depth Sounder with Air and Water Temperature (Transom Mounted Transducer)
F13750	DS0111	2	Depth Sounder (Transom Mounted Transducer)
F13751	DS0111	2	Depth Sounder (In-Hull Mounted Transducer)
F13795	DS0111	2	Depth Sounder (Thru-Hull Transducer) (Requires 1 5/8" hole in vessel.)

Tachometers			
F33710	TC9785	4	Tachometer (6000 RPM) (Gas) (Inboard & I/O)
F33718	TC9035	4	Tachometer (7000 RPM) (All outboard)
F33742	TD9127	4	Tachometer (4000 RPM) (Diesel) (Mechanical takeoff & var ratio alt)
F33763	TCH323	5	Tachometer with Hourmeter (6000 RPM) (Gas) (Inboard)
F33732	TC9127	4	Tachometer with Hourmeter (6000 RPM) (Gas) (Inboard)
F33750	TC9884	4	Tachometer (7000 RPM) with SystemCheck Indicator (Gas) (I/E Outboard)

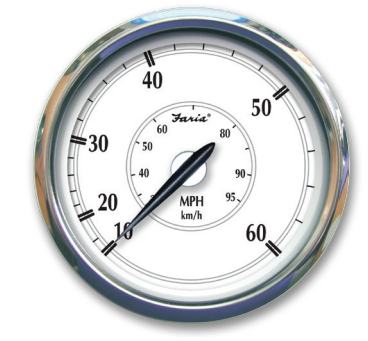
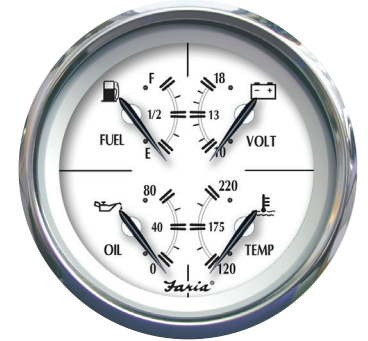
GPS Speedometers			
F33761	SGP501	5	Speedometer (60 MPH) (GPS) (Studded)
F33730	SGP012	4	Speedometer (80 MPH) (GPS) (LCD)
F33749	SGP114	4	Speedometer (60 MPH) (GPS) (Studded)

Speedometers			
F33704	SE9509	4	Speedometer (60 MPH) (Pitot)

Multi-Function Instruments			
F33762	GF4005	5	Multifunction [Fuel Level Oil PSI (80 PSI) Water Temp (120-220 F) Voltmeter (10-18 VDC)]
F33751	GF0007	4	Multifunction [Fuel Level Oil PSI (80 PSI) Water Temp (120-220 F) Voltmeter (10-18 VDC)]

Indicators			
F13701	GP9368	2	Fuel Level Gauge (E-1/2-F)
F13702	GP9640	2	Oil Pressure Gauge (80 PSI)
F13712	OP1018	2	Water Pressure Gauge Kit (30 PSI)
F13704	GP9142	2	Water Temperature Gauge (100-250 F)
F13707	GP9402	2	Trim Gauge (Mercury/Mariner/Mercuriser/Volvo DP/Yamaha-2001 and newer)
F13709	GP9414	2	Trim Gauge (I/E/Suzuki Outboard)
F13715	MH0239	2	Hourmeter [Digital] (12-32 volts)
F13725	GP7377	2	Rudder Angle Indicator
F13705	VP9154	2	Voltsmeter (10-16 VDC)





NEWPORT STAINLESS STEEL

Perimeter lighted white dial with classic black and grey graphics, hand-polished stainless steel bezel, domed fog resistant lens and two piece pointer. Instruments illuminate red for improved low light visibility and connection type is studded.

Catalog	Factory	Size	Description
KTF0200	KTF0200		Boxed Set - Inboard - Speedo (60 MPH) (Pitot) Tach (6000 RPM) Fuel Level Voltmeter (10-16 VDC) Water Temp (100-250 F) Oil PSI (80 PSI)

Tachometers			
F45000	TC9491	4	Tachometer (7000 RPM) with SystemCheck Indicator (Gas) (I/E Outboard)
F45002	TD9516	4	Tachometer (6000 RPM) (Gas) (Inboard & I/O)
F45003	TC9518	4	Tachometer (7000 RPM) (All Outboard)
F45004	TCH253	4	Tachometer with Hourmeter (6000 RPM) (Gas) (Inboard & I/O)
F45005	TCH324	4	Tachometer with Hourmeter (7000 RPM) (All Outboard)
F45006	TDH271	4	Tachometer with Hourmeter (4000 RPM) (Diesel) (Mag Pick-Up)
F45007	TDH272	4	Tachometer with Hourmeter (4000 RPM) (Diesel) (Mech takeoff & var ratio alt)

GPS Speedometers			
F45011	SGP129	4	Speedometer (60 MPH) (GPS) (Studded)

Multi-Function Instruments			
F45012	GF0128	4	Multifunction [Fuel Oil (80 PSI) Water Temp (120-220 F) Voltmeter 10-18]

Indicators			
F25000	GP8158	2	Fuel Level Gauge (E-1/2-F)
F25001	GP8159	2	Oil Pressure Gauge (80 PSI)
F25002	GP8160	2	Water Temperature Gauge (100-250 F)
F25003	GP8161	2	Trim Gauge (Mercury/Mariner/Mercruiser/Volvo DP/Yamaha-2001 and newer)
F25009	VP4081	2	Voltmeter (10-16 VDC)

KRONOS

Polished Stainless Steel Bezel, Flat Glass Lens, Perimeter Lighted Spun Aluminum dial with Gold and Black graphics. Gold increments and Logo on dial are Embossed. All instruments include two piece Newport Pointer with White Hub.

Catalog	Factory	Size	Description
KTF024	KTF024		Boxed Set - Inboard - Speedo - 60 MPH) (Mech) Tach (6000 RPM) Fuel Level Voltmeter (10-16 VDC) Water Temp (100-250 F) Oil PSI (80 PSI)

Depth Sounders			
F19150	DS0131	2	Depth Sounder (In-Hull Mounted Transducer)

Tachometers			
F39004	TC9983	4	Tachometer (6000 RPM) (Gas) (Inboard & I/O)
F39005	TC9252	4	Tachometer (7000 RPM) (All outboard)

Speedometers			
F39009	SE9945	4	Speedometer (60 MPH) (Pitot)

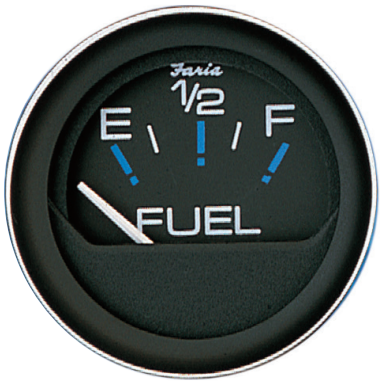
Indicators			
F19001	GP7683	2	Fuel Level Gauge (E-1/2-F)
F19002	GP7684	2	Oil Pressure Gauge (80 PSI)
F19007	OP1171	2	Water Pressure Gauge Kit (30 PSI)
F19003	GP7682	2	Water Temperature Gauge (100-250 F)
F19005	GP7681	2	Trim Gauge (Mercury/Mariner/Mercruiser/Volvo DP/Yamaha-2001 and newer)
F19020	MH0144	2	Hourmeter (10,000 hrs) (12-32 VDC)
F19004	VP7102	2	Voltmeter (10-16 VDC)



CORAL

Perimeter-lighted black dial with stylish white and blue graphics, black aluminum bezel with burnished leading edge, contoured white pointer, and flat glass lens.

Catalog	Factory	Size	Description
Tachometers			
F33004	TC9493	4	Tachometer (6000 RPM) (Gas) (Inboard & I/O)
F33005	TC9036	4	Tachometer (7000 RPM) (All outboard)
Speedometers			
F33009	SE9216	4	Speedometer (55 MPH) (Pitot)
Indicators			
F13001	GP9346	2	Fuel Level Gauge (E-1/2-F)
F13020	GP9390	2	Fuel Level Gauge (Metric)
F13002	GP9527	2	Oil Pressure Gauge (80 PSI)
F13003	OP1000	2	Water Pressure Gauge Kit (30 PSI)
F13009	GP9405	2	Cylinder Head Temperature (60 - 220 F) with sender
F13004	GP9461	2	Water Temperature Gauge (100-250 F)
F13017	GP9348	2	Trim Gauge (Mercury/Mariner/Mercuriser/Volvo DP/Yamaha-2001 and newer)
F13016	GP9273	2	Trim Gauge (J/E/Suzuki Outboard)
F13010	VP9106	2	Voltmeter (10-16 VDC)



PLATINUM

Polished Stainless Steel Bezel, Domed Fog Resistant Glass Lens, Perimeter Lighted Spun Aluminum dial with White and Black graphics. LED back lighted pointer with orange tip.

Catalog	Factory	Size	Description
KTF0186	KTF0186		Boxed Set - Inboard - Speedo (70 MPH) (Mech) Tach (7000 RPM) Fuel Level Voltmeter (10-16 VDC) Water Temp (100-250 F) Oil PSI (80 PSI)
KTF0185	KTF0185		Boxed Set - Outboard - Speedo (70 MPH) (Mech) Tach (7000 RPM) Fuel Level Voltmeter (10-16 VDC)
Depth Sounders			
F22025	DS0176	2	Depth Sounder (In-Hull Mounted Transducer)
Tachometers			
F22009	TC8511	4	Tachometer (7000 RPM) (Gas) (Inboard, Outboards & I/O)
Speedometers			
F22010	SGP128	4	Speedometer (60 MPH) (GPS) (Studded)
F22011	SE9863	4	Speedometer (70 MPH) (Pitot)
Multi-Function Instruments			
F22014	GF0417	4	Multifunction [Fuel Level Oil PSI (80 PSI) Water Temp (120-220 F) Voltmeter (10-18 VDC)]
F22015	GS0075	4	Multifunction [Speedometer (65 MPH) (Pitot) Fuel Level]
F22016	GT0104	4	Multifunction [Tachometer (7000 RPM) Voltmeter (10-16 VDC)]
F22013	GF0275	4	Multifunction [Fuel Level Voltmeter (10-16 VDC)]
Indicators			
F22021	GP5088	2	Fuel Level Gauge (E-1/2-F)
F22024	GP5089	2	Oil Pressure Gauge (80 PSI)
F22023	OP1177	2	Water Pressure Gauge Kit (30 PSI)
F22017	GP5084	2	Water Temperature Gauge (100-250 F)
F13715	MH239	2	Hourmeter [Digital] (12-32 volts)
F22019	GP5086	2	Trim Gauge (Mercury/Mariner/Mercuriser/Volvo DP/Yamaha-2001 and newer)
F22022	VP7179	2	Voltmeter (10-16 VDC)



DRESS WHITE

Perimeter-lighted white dial with bold black graphics, white aluminum bezel, contoured black pointer, and flat glass lens.

Factory		Size	Description
KT9797	KT9797		Boxed Set - Inboard - Speedo (55 MPH) (Mech) Tach (6000 RPM) Fuel Level Voltmeter (10-16 VDC) Water Temp (100-250 F) Oil PSI (80 PSI)
KT9794	KT9794		Boxed Set - Outboard - Speedo (55 MPH) (Mech) Tach (7000 RPM) Fuel Level Voltmeter (10-16 VDC)

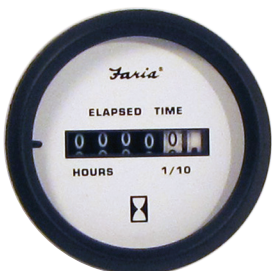
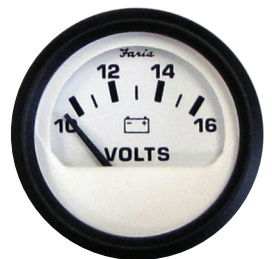
Depth Sounders			
F13150	DS0114	2	Depth Sounder (Transom Mounted Transducer)
F13151	DS0114	2	Depth Sounder (In-Hull Mounted Transducer)

Tachometers			
F33103	TC9691	4	Tachometer (6000 RPM) (Gas) (Inboard & I/O)
F33104	TC9038	4	Tachometer (7000 RPM) (All outboard)
F33132	TC9124	4	Tachometer with Hourmeter (6000 RPM) (Gas) (Inboard)
F33150	TC9887	4	Tachometer (7000 RPM) with SystemCheck Indicator (Gas) (I/E Outboard)

GPS Speedometers			
F33147	SGP111	4	Speedometer (60 MPH) (GPS) (Studded)

Speedometers			
F33112	SE9475	4	Speedometer (55 MPH) (Pitot)
F33113	SE9476	4	Speedometer (80 MPH) (Pitot)

Indicators			
F13101	GP9389	2	Fuel Level Gauge (E-1/2-F)
F13102	GP9573	2	Oil Pressure Gauge (80 PSI)
F13108	OP1006	2	Water Pressure Gauge Kit (30 PSI)
F13113	GP9444	2	Cylinder Head Temperature (60 - 220 F) with sender
F13110	GP9120	2	Water Temperature Gauge (100-250 F)
F13122	GP9712	2	Trim Gauge (Mercury/Mariner/Mercruiser/Volvo DP/Yamaha-2001 and newer)
F13123	GP9711	2	Trim Gauge (I/E/Suzuki Outboard)
F13130	MH0240	2	Hourmeter [Digital] (12-32 volts)
F13120	VP9139	2	Voltmeter (10-16 VDC)



EURO WHITE

Perimeter-lighted white dial with bold black graphics, black aluminum bezel, contoured white pointer, and flat glass lens.

Catalog	Factory	Size	Description
KT9798	KT9798		Boxed Set - Inboard - Speedo (55 MPH) (Mech) Tach (6000 RPM) Fuel Level Voltmeter (10-16 VDC) Water Temp (100-250 F) Oil PSI (80 PSI)
KT9795	KT9795		Boxed Set - Outboard - Speedo (55 MPH) (Mech) Tach (7000 RPM) Fuel Level Voltmeter (10-16 VDC)

Tachometers			
F32904	TC9679	4	Tachometer (6000 RPM) (Gas) (Inboard & I/O)
F32905	TC9003	4	Tachometer (7000 RPM) (All outboard)
F32942	TD9123	4	Tachometer (4000 RPM) (Diesel) (Mechanical takeoff & var ratio alt)
F32950	TC9886	4	Tachometer (7000 RPM) with SystemCheck Indicator (Gas) (I/E Outboard)

Speedometers			
F32909	SE9473	4	Speedometer (55 MPH) (Pitot)

Indicators			
F12901	GP9358	2	Fuel Level Gauge (E-1/2-F)
F12902	GP9596	2	Oil Pressure Gauge (80 PSI)
F12903	OP1005	2	Water Pressure Gauge Kit (30 PSI)
F12904	GP9119	2	Water Temperature Gauge (100-250 F)
F12916	GP9709	2	Trim Gauge (Mercury/Mariner/Mercruiser/Volvo DP/Yamaha-2001 and newer)
F12915	GP9708	2	Trim Gauge (I/E/Suzuki Outboard)
F12913	MH0243	2	Hourmeter [Digital] (12-32 volts)
F12911	VP9136	2	Voltmeter (10-16 VDC)

STANDARD BOXED SETS



Packaged and ready for the display counter.

These Boxed Sets offer a complete set of gauges ready to install.

When upgrading your engine don't forget about your instruments.

Faria Beede has an easy plug and play instrument replacement set that works with your new engine.

Available in the following styles:

- Chesapeake White Stainless Steel
- Chesapeake Black Stainless Steel
- Euro
- Euro White
- Dress White
- Platinum (Fog Resistant Lens)
- Kronos

Boxed Sets

Style	Factory	Description	Quantity
Newport SS FR - Red	KTF0200	Inboard Set	6 gauge
Platinum SS FR - Blue	KTF0186	Inboard Set	6 gauge
Platinum SS FR - Blue	KTF0185	Outboard Set	4 gauge
Euro	KT9799	Inboard Set	6 gauge
Euro	KT9796	Outboard Set	4 gauge
Euro White	KT9798	Inboard Set	6 gauge
Euro White	KT9795	Outboard Set	4 gauge
Dress White	KT9797	Inboard Set	6 gauge
Dress White	KT9794	Outboard Set	4 gauge
Chesapeake SS White	KTF001	Inboard Set	6 gauge
Chesapeake SS White	KTF002	Outboard Set	4 gauge
Chesapeake SS Black	KTF003	Inboard Set	6 gauge
Chesapeake SS Black	KTF004	Outboard Set	4 gauge
Kronos	KTF024	Inboard Set	6 gauge

Boxed Sets with GPS Speedometers

Style	Factory	Description	Quantity
Chesapeake Black SS	KTF064	Inboard Set	6 gauge
Chesapeake White SS	KTF063	Inboard Set	6 gauge



ACCESSORIES



Covers - Black
CV0068, CV0069, CV0070



Covers - White
CV0065, CV0069, CV0067



Covers - Black
CV0068, CV0069, CV0070

TRANSDUCERS



**Retractable Tri-ducer/
Thru-Hull Transduce**
SN2031

Depth / Paddle Wheel
Speed
/ Temperature Sensor
1 5/8" thru hull depth
transducer.
(Requires 1 5/8" hole in
vessel.)



Thru-hull Transducer
SN2060A

1 5/8" thru hull depth
transducer.
(Requires 1 5/8" hole in
vessel.)



**Transom Mounted
Depth Transducer**
SN2011

With a low profile this
depth unit offers little
drag and easy installa-
tion for dead rise
angles up to 30°.
Designed with a
release bracket to pro-
tect against impact
damage. This unit pro-
vides good high speed
operations up to 55
knots.

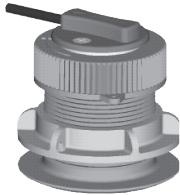


**Adjustable In hull
Transducer**
SN2010

This in-hull transducer has a
patented adjustable feature
which ensures that sound
waves are transmitted
vertically to the bottom on
almost any hull with a dead
rise up to 22°. With no hull
penetration, installation is
easy and high speed
performance is maximized.

SENDERS

Combined with our Depth Sounders and other electronic instrumentation these transducers and senders offer a wide range of options to fit your needs.



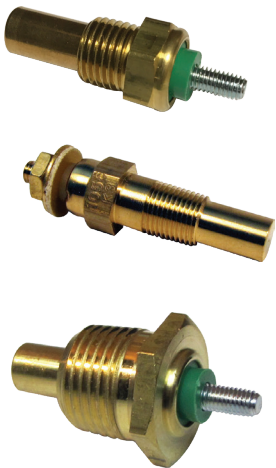
Thru-hull Flush Mounted Temperature and Speed Sender SN0015

Perfect for water sports which require continuous accurate speed measurements like water-skiing, where boat angles can sometimes interrupt transom mounted senders. The thru-hull flush mounted temperature and speed sender offer virtually no drag. Easy installation and accuracy makes this sender the perfect choice for water sports. (Requires 1 5/8" hole in vessel.)

Temperature Senders

- 1/8" NPTF
- A wide variety of sender types
- Metric and standard values available

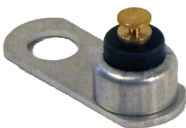
Catalog	Factory	Description
F90401	TS1029	SENDER (Temperature) (1/8) (American Single Standard)
F90402	TS2035	SENDER (Temperature) (1/4) (American Single Standard)
F90403	TS3044	SENDER (Temperature) (3/8) (American Single Standard)
F90404	TS4042	SENDER (Temperature) (1/2) (American Single Standard)
F90406	TS1056	SENDER (Temperature) (1/8) (American Dual Standard)
F90412	TS1058	SENDER (Temperature) (1/8) (European Single Standard)
F90405	TS5026	SENDER (Cylinder Head Temperature)



Pressure Senders

- 1/8" NPTF
- A wide variety of sender types
- Metric and standard values available

Catalog	Factory	Description
F90512	SD0003	SENDER (Oil Pressure) (1/8 NPTF American 80 PSI) (Single Standard)
F90511	SD0025	SENDER (Oil Pressure) (1/8 NPTF American 80 PSI) (Dual Standard)
F90516	SD0031	SENDER (Oil Pressure) (1/8 NPTF European 5 BAR) (Single Float)
F90519	SD0006	SENDER (Oil Pressure) (1/8 NPTF American 100 PSI) (Single Standard)



Other Senders

Catalog	Factory	Description
F90530	SD0041	SENDER (Rudder Angle) (Single station) (Standard or Floating ground)
F91105	CG0001	PITOT KIT (Escutcheon cover plate for pitot tubing)
F91106	KS9003	PITOT KIT (Universal) (20 ft. tubing)
F91109	KS9007	PITOT KIT (Universal)

REPAIR & WARRANTY

Repair costs can get expensive.

Restore • Replace • Rebuild • Repower

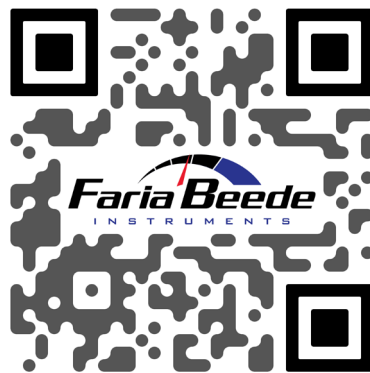
Faria Beede Limited Warranty

During the first 36 months from the date of original retail purchase (12 month for fog resistant lens – reference ISO374 for reducing instrument fogging) Riverside Mfg., LLC will repair or replace any instrument(s) that fails due to defects in materials or workmanship at no charge. Warranty coverage shall deviate from this document only upon written agreement signed by authorized representatives of the parties.

Online Gauge
Repair



Gauge specifications &
gauge customization



Limited
Warranty



For more info and inquiries visit our website
@ www.fariabeede.com.



riversidemfg.com & fariabeede.com

Faria Beede Instruments, Inc. | North Stonington, CT 06359

Phone: 860.848.9271 | Fax: 860.848.2704